

幼・保・小・中・高校の先生方へ

先生のための美術館活用術

【日時】 7月24日(水) 午前9時30分～(90分程度)
8月23日(金) 午後3時～(90分程度)
両日とも同じ内容

【講師】当館普及スタッフ

【定員】各日20名(事前予約制・先着順)

【費用】無料

【会場】企画展示室+常設展示室

【内容】栃木県立美術館で開催する企画展、コレクション展において、教職員の方を対象にした美術館の活用方法や鑑賞ツールをご紹介します。自己研修や、見学の見直しなどにご利用ください。



どなたでも スタンプラリー

「栃木県立美術館年間スケジュール」(パンフレット)を受付にてご提示ください。スタンプを5個集めると素敵なプレゼントがもらえます。詳しくは年間スケジュールパンフレットをご覧ください。

M 高校生・大学生・一般の方へ M割(ミュージアム割引)

一般または、団体料金で6ヶ月以内に購入した栃木県立美術館もしくは栃木県博物館協会のM割参加館の半券を窓口で提示してください。団体割引でご覧いただけます。

*半券の有効期限は6ヶ月です。

*半券1枚につき1回限り有効です。

*他の割引制度との併用は出来ません。



どなたでも 音声ガイド

展示会や作品の解説を音声で行います。受付にて無料で貸出しします。

【協力】栃木県立宇都宮中央女子高等学校



どなたでも タブレットガイド

常設展示の作品解説を5か国語による文章で紹介しています。常設展示室受付で無料で貸出しします。



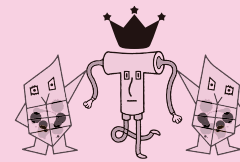
どなたでも 栃木県立美術館最新情報

展示会やイベント、ワークショップなどの最新情報をホームページで随時更新しています。フェイスブック、ツイッター等でも情報を配信しています。

<http://www.art.pref.tochigi.lg.jp/>

他にも
特典が
いっぱい!

EVENT



2019.4 — 2020.3

PROGRAMS

2019



栃木県立美術館 イベント スケジュール



The Tochigi Prefectural Museum of Fine Arts opened in 1972 as one of the first public museums of modern and contemporary art in Japan. Kiyoshi KAWASAKI designed the museum architecture including the collection galleries built in 1981. The museum houses a collection of Japanese modern and contemporary artworks, primarily those with connection to Tochigi Prefecture. It is also notable for the works by famous artists of Western Europe such as France, England and Germany. The collection comprises around 9000

preservation, education, and promotion that will be useful to visitors. Additionally, we maintain an aesthetic environment in order to liberate the mind. Objectives: Exhibition, collection, preservation and research relating to art works. Active participation in national and international art scenes. Various activities (lectures, concerts, performances, workshops, etc.) for the improvement of art and culture. Close relationship with school education. Presentation of artistic circumstances for refinement of the mind. Cooperation with friends and affiliated organizations. Visit: Hours / Closed Hours: 9:30-17:00 (open on Mondays that fall on national holidays, in which case the museum is closed on the following Tuesday), preparation periods for exhibition and year-end and New Year holidays. Special Exhibitions Admission varies according to exhibition. See website for details. Special Facilities: Audio Guide(free). The audio guide provides self-guided audio tours for exploring special exhibitions (only in Japanese). Available at the information desk free of charge. Tablet Guide(free). The tablet guide helps you discover more about the highlight objects from the museum. Available in Japanese and English, including brief trailers in and Korean. You can pick up a free tablet device at the information desk of the collection galleries. Accessibility: Wheelchairs and baby

strollers are available at the information desk. All galleries and facilities are wheelchair accessible. Baby strollers are permitted at all times. The Tochigi Prefectural Museum of Fine Arts opened in 1972 as one of the first public museums of modern and contemporary art in Japan. The exhibits from the best collection of Meissen porcelain in Japan are rotated about 4 times annually. Concept: The museums an institution for societal education. At the same time, we aim to be utilized by school education. We carry out research, collection, preservation, education, and promotion that will

The exhibits from the best collection of Meissen porcelain in Japan are rotated about 4 times annually. Concept: The museums an institution for societal education. At the same time, we aim to be utilized by school education. We carry out research, collection, preservation, education, and promotion that will

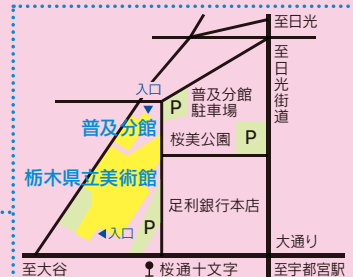


objects, including prints, illustrated books, photographs, and crafts. We hold 4 special exhibitions a year in addition to collection exhibits rotations. In the Meissen Porcelain Collection Room, around 100 works are displayed. The exhibits from the best collection of Meissen porcelain in Japan are rotated about 4 times annually. Concept: The museum is an institution for societal education. At the same time, we aim to be utilized by school education.

objects, including prints, illustrated books, photographs, and crafts. We hold 4 special exhibitions a year in addition to collection exhibits rotations. In the Meissen Porcelain Collection Room, around 100 works are displayed. The exhibits from the best collection of Meissen porcelain in Japan are rotated about 4 times annually. Concept: The museum is an institution for societal education. At the same time, we aim to be utilized by school education.

objects, including prints, illustrated books, photographs, and crafts. We hold 4 special exhibitions a year in addition to collection exhibits rotations. In the Meissen Porcelain Collection Room, around 100 works are displayed. The exhibits from the best collection of Meissen porcelain in Japan are rotated about 4 times annually. Concept: The museum is an institution for societal education. At the same time, we aim to be utilized by school education. We carry out research, collection, preservation, education, and promotion that will be useful to visitors. Additionally, we maintain an aesthetic environment in Porcelain Collection Room, around 100 works are displayed. The exhibits from the best collection of Meissen porcelain in Japan are rotated about 4 times annually. Concept: The museum is an institution for societal education. At the same time, we aim to be utilized by school education. We carry out research, collection, preservation, education, and promotion that will be useful to visitors. Additionally, we maintain an aesthetic environment in Porcelain Collection Room, around 100 works are displayed.

of Japanese modern and contemporary artworks, primarily those with connection to Tochigi Prefecture. It is also notable for the works by famous artists of Western Europe such as France, England and Germany. The collection comprises around 9000 objects, including prints, illustrated books, photographs, and crafts. We hold 4 special exhibitions a year in addition to collection exhibits rotations. The Meissen Porcelain Collection Room. around 100 works are displayed. The exhibits from the best collection of Meissen porcelain in Japan are rotated about 4 times annually. Concept: The museum is an institution for societal education. At the same time, we aim to be utilized by school education. We carry out research, collection, preservation, education, and promotion that will be useful to visitors. Additionally, we maintain an aesthetic environment in Porcelain Collection Room, around 100 works are displayed.



【交通案内】
電車・バス
・JR東京駅から東北新幹線にて50分
・JR宇都宮駅(西口6番・7番バス乗場)、東武宇都宮駅から「関東バス 作新学院・駒生行き」にて「桜通十文字」バス停下車 徒歩5分
自家用車
・東北自動車道鹿沼ICより約10km、約20分
・北関東自動車道壬生ICより約13km、約25分

栃木県立美術館

Tochigi Prefectural Museum of Fine Arts
〒320-0043 宇都宮市桜4-2-7 TEL.028-621-3566
<http://www.art.pref.tochigi.lg.jp/>

